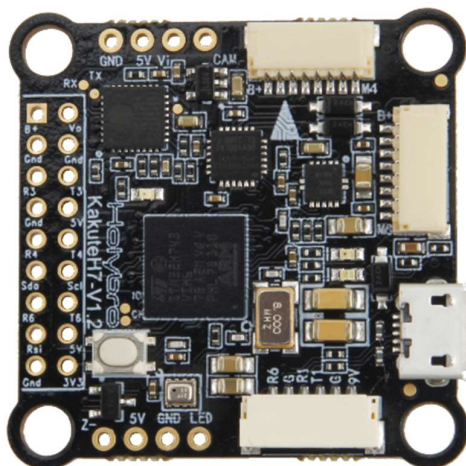


KAKUTE H7

Flight Controller w/ Bluetooth



Description:

The Holybro Kakute H7 Flight Controller is full of features including integrated Bluetooth, dual plug-and-play 4in1 ESC ports, barometer, OSD, 6x UARTs, full Blackbox MicroSD card slot, 5V and 9V BEC, easy soldering layout and much more.

The Kakute H7 builds upon the best features of its F7 predecessor and further improves on hardware components and layout. With the additional integrated Bluetooth chip onboard, you can perform Betaflight configuration and tuning wirelessly on your phone with the SpeedyBee Android & IOS App.

The Kakute H7 is DJI HD ready. It has an easy plug-and-play port with an on-board 9V regulator designed to power your HD video transmitter like DJI/Caddx FPV Air Unit & Caddx Vista while supporting analog system.

It has 6x dedicated UART ports with built-in inversion for peripherals (UART2 is used for Bluetooth telemetry), along with a full MicroSD Card slot for virtually unlimited Blackbox data logging. Dual plug-and-play 4in1 ESC connectors, allowing easy plug-and-play support for x8 Octocopter configuration and keeping it simple and clean.

The integrated BetaFlight OSD makes it easy to display important information on your FPV display like battery voltage, flight time, warnings, RSSI, smart audio features and more. It is also ready for autonomous flight with the on-board barometer. There are LED & buzzer pad, I2C pad (SDA & SCL) for external GPS/Magnetometers.

Specification:

MCU - STM32H743 32-bit processor running at 480 MHz

IMU - MPU6000

Barometer - BMP280

OSD - AT7456E

Onboard Bluetooth chip - ESP32-C3

Note: The Bluetooth onboard is set to automatically turn off when the flight controller is unlocked (arm) and turn on automatically when the flight controller is locked (disarm).

6x UARTs (1,2,3,4,6,7; UART2 is used for Bluetooth telemetry)

9x PWM Outputs (8 Motor Output, 1 LED)

2x JST-SH1.0_8pin port (4in1 ESCs, x8/Octocopter compatible)

1x JST-GH1.5_6pin port (For HD System like Caddx Vista & Air Unit)

Battery input voltage: 7V to 42V

BEC 5V 2A Cont.

BEC 9V 1.5A Cont.

Mounting - 30.5 x 30.5mm/ Φ 4mm hole with Φ 3mm Grommets

Dimension - 35x35mm

Weight - 8g

Package Includes:

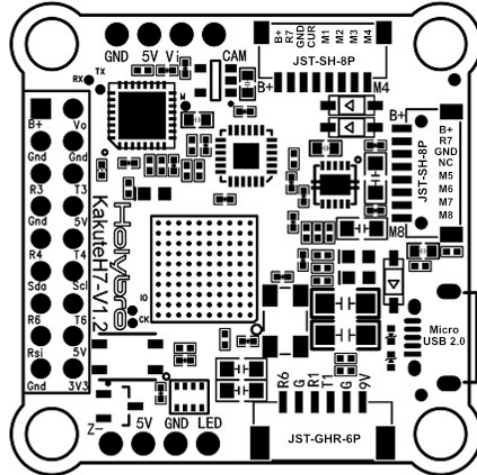
1x Kakute H7 Flight Controller

4x M3 Silicon Grommets

2x JST SH 8pin 150mm cable (For ESCs)

1x JST GH 6pin to JST GH 8pin cable (For Air Unit)

1x JST GH 6pin Cable (For Caddx Vista)



Pin	Function
B+	Battery positive voltage (2S-6S)
SDA, SCL	I ² C connection (for peripherals)
5v	5v output (2A max)
3v3	3.3v output (0.25A max)
Vi	Video input from FPV camera
Vo	Video output to video transmitter
CAM	To camera OSD control
G or GND	Ground
RSI	Analog RSSI (0-3.3v) input from receiver
R3, T3	UART3 RX and TX
R4, T4	UART4 RX and TX
R6, T6	UART6 RX and TX (UART6 RX is located in the GH plug)
LED	WS2182 addressable LED signal wire
Z-	Piezo buzzer negative leg
	<i>Connect buzzer positive leg to 5v pad</i>
Boot	Bootloader button

DJI Port	Function
9V	9v output (1.5A max)
G	Ground
T1	UART1 TX
R1	UART1 RX
G	Ground
R6	UART6 RX

ESC Port 1	Function
B+	Battery positive voltage (2S-6S)
R7	UART7 RX
GND	Ground
CURRENT	CURRENT
M1	Motor signal outputs (located in plug)
M2	
M3	
M4	

ESC Port 2	Function
B+	Battery positive voltage (2S-6S)
R7	UART7 RX
GND	Ground
NC	No connect
M5	Motor signal outputs (located in plug)
M6	
M7	
M8	